

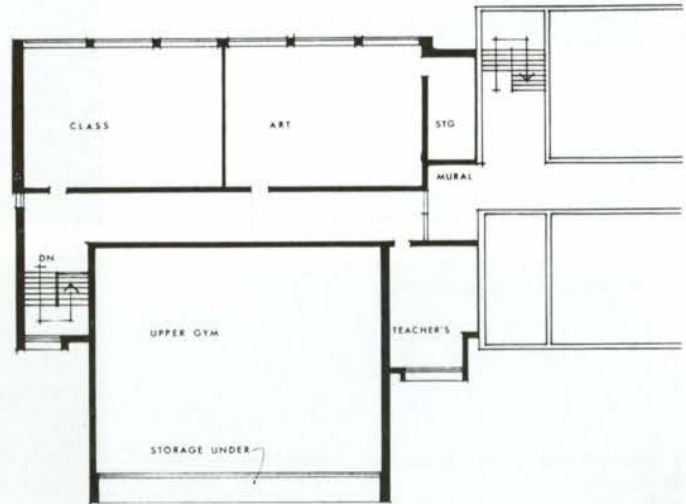
1

CORVETTE AVENUE PUBLIC SCHOOL ADDITION NUMBER 4
 ARCHITECT — JEROME MARKSON • STRUCTURAL ENGINEER — M. S. YOLLES ASSOCIATES LIMITED • MECHANICAL ENGINEER — ELLARD-WILLSON ASSOCIATES LIMITED
 CONTRACTOR — A. WELLER & COMPANY LIMITED

1. West elevation of gymnasium showing connection to the existing structure.
 2. Second floor corridor with clerestory lighting. 3. Second floor plan. 4. General view from the north-west.
 Photos by Morley Markson.



2



3



4