



Foyer — walls, natural brick; stairwell, white; display case and clock, blue.

Norseman Public School, Etobicoke, Ontario

*Architect, Gordon S. Adamson*

*Structural Engineers, Wallace, Carruthers & Associates Ltd.*

*Mechanical Engineers, R. P. Allsop & Associates Ltd.*

*General Contractors, Dalton Engineering & Construction Co. Ltd.*

View before landscaping

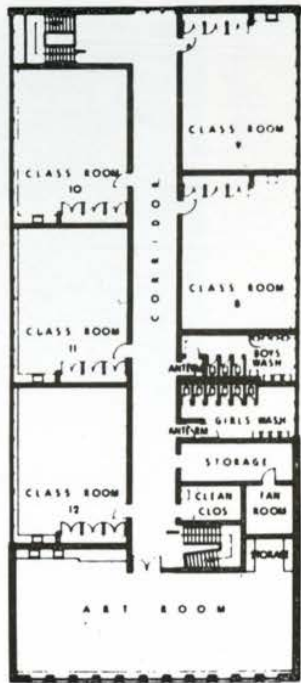


MAX FLEET

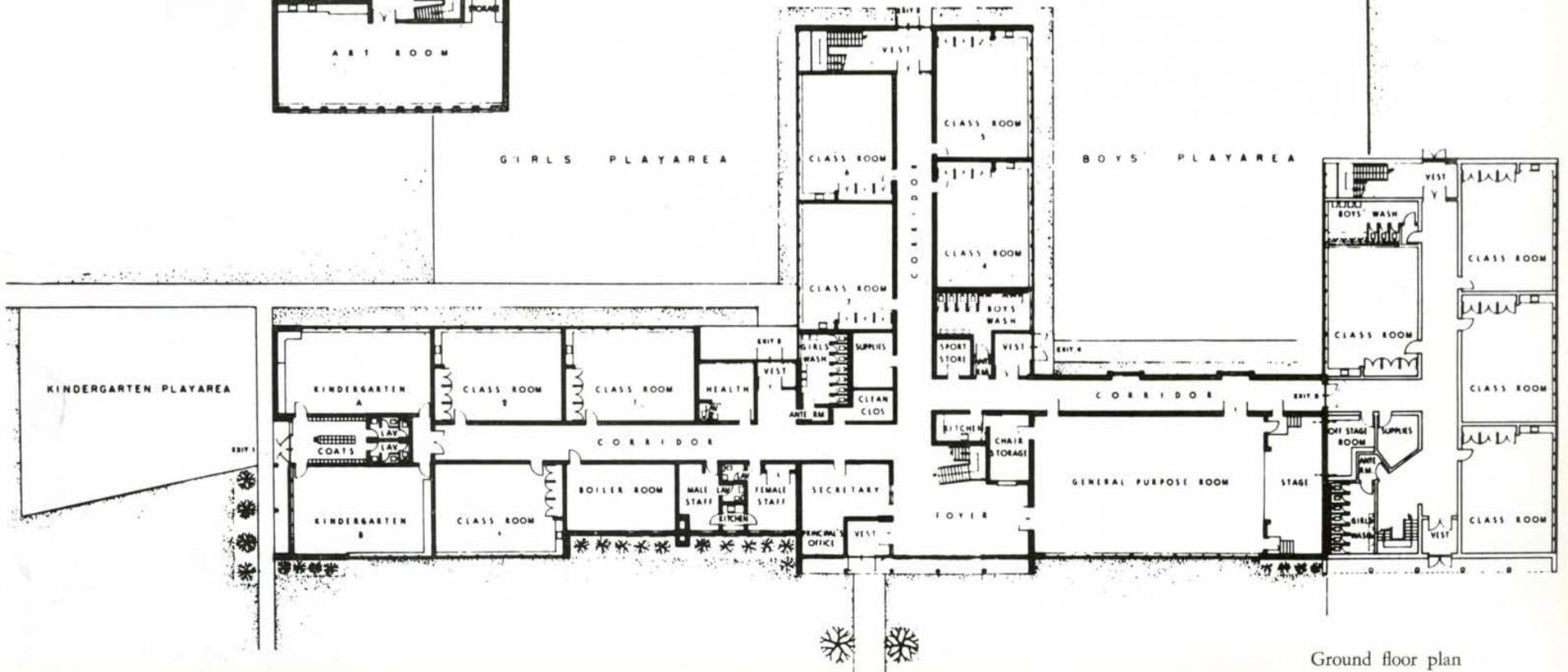
Typical classroom

Kindergarten entrance





Second floor plan



Ground floor plan