

# Regent Park Public School, Toronto

Architects Department, Toronto Board  
of Education,

F. C. Etherington, Chief Architect

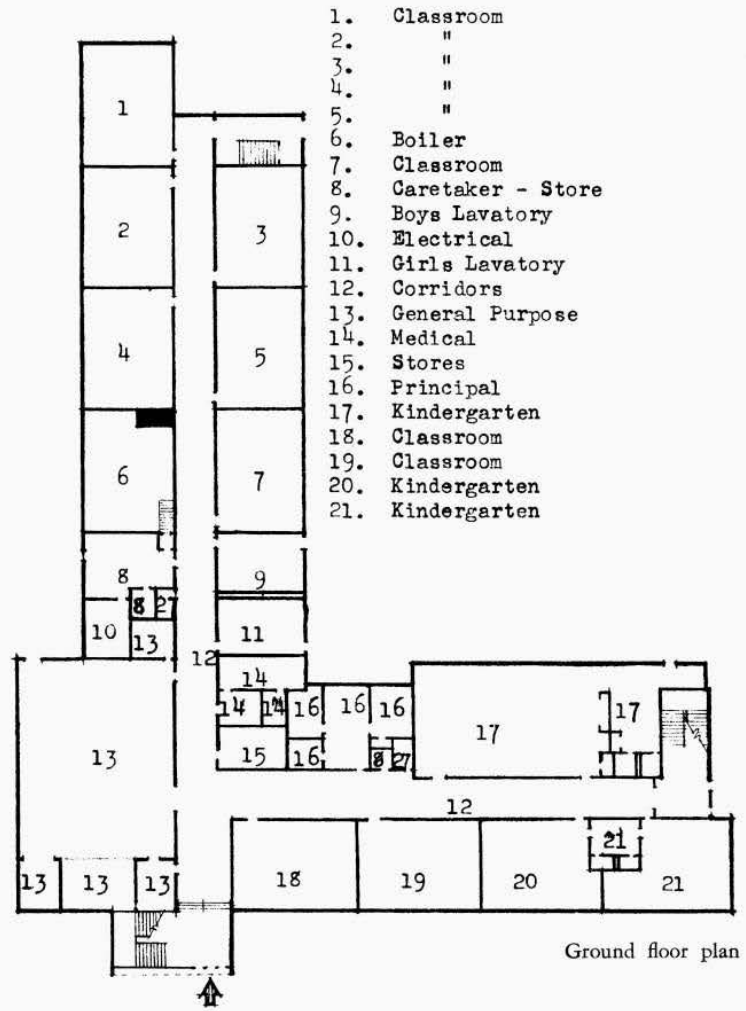
G. D. Frittenburg, Deputy Chief Architect

General Contractor, Bennett-Pratt Ltd.

Structural Engineer, J. S. Ma

Mechanical Engineer, H. C. Facey

Electrical Engineer, N. Fodor

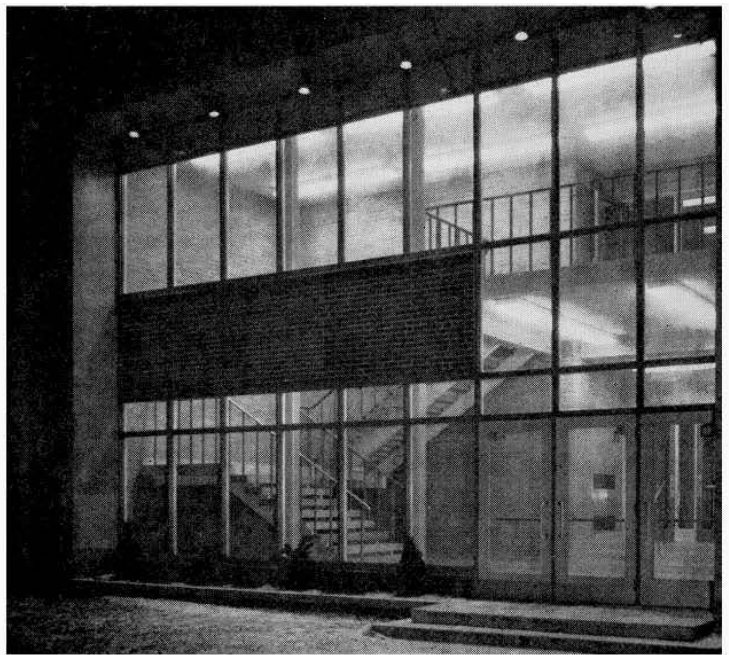


Ground floor plan

South elevation

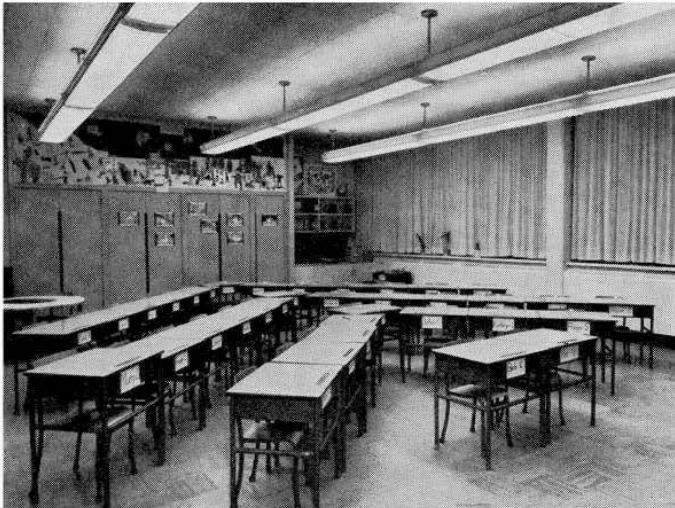
METROPOLITAN PHOTOS



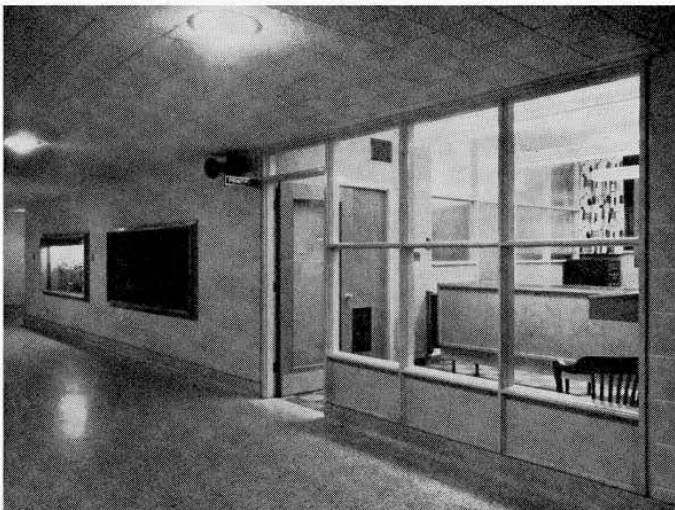


Main entrance

Typical classroom



Administration office



Gross area of building.....	40,600 sq. ft.
Square foot area per pupil.....	46.7 sq. ft.
Cost .....	\$15.27 per sq. ft.

*The building structure is two storey, reinforced concrete and bearing wall design. The floors in the corridors and wash-rooms are terrazzo; classrooms are linoleum and vinyl tile. Acoustic ceilings have been used generally throughout the building, with walls of slag block painted to provide a pleasant environment for the occupants, with all chalkboard of green Lite-Site for eye comfort.*

*The building is heated by two oil-fired boilers which supply a two-pipe heating system with automatic temperature controls in each classroom. The school is ventilated by a modern system of filtered, humidified and tempered air which is pumped to all classrooms, with a separate system for isolating the General Purpose Room. All foul air is pumped to the atmosphere.*