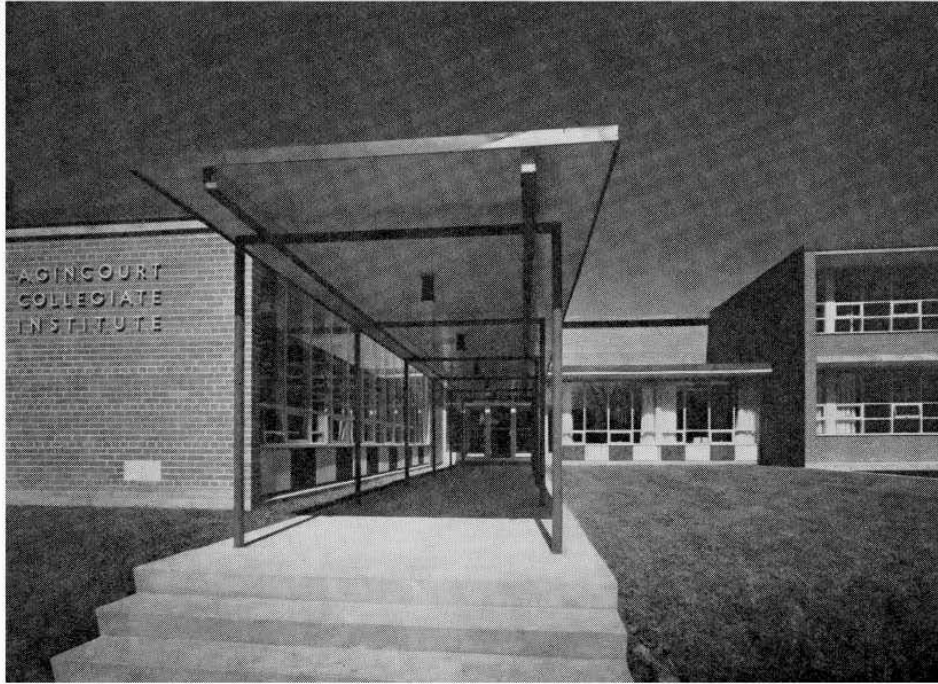


# FIVE ONTARIO SCHOOLS

MAX FLEET



Main entrance

## Agincourt Collegiate Institute, Agincourt

*Architects, Craig, Madill, Abram and Ingleson*

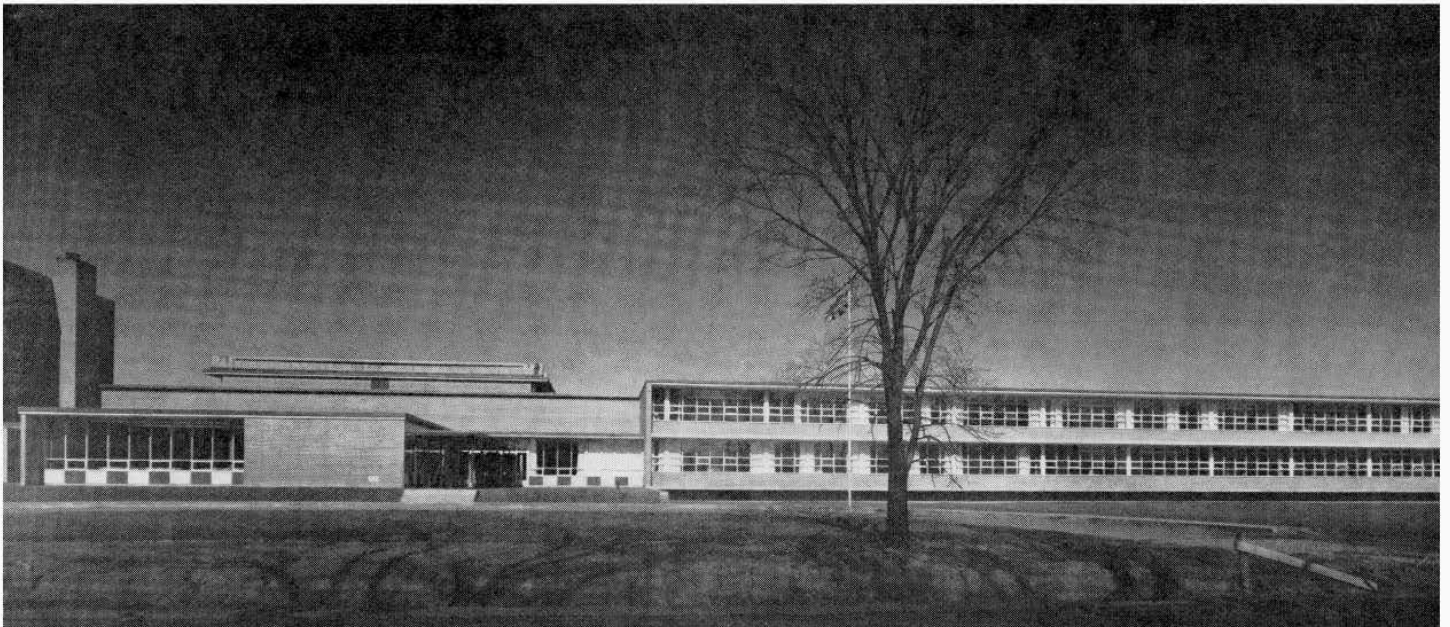
*Structural Engineers, Onasick and McMurtry*

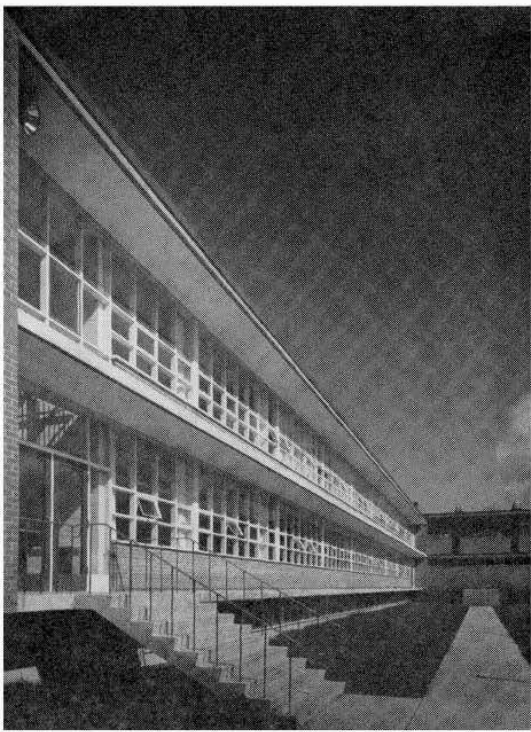
*Mechanical and Electrical Engineers,*

*Flanagan and Black*

West elevation from street

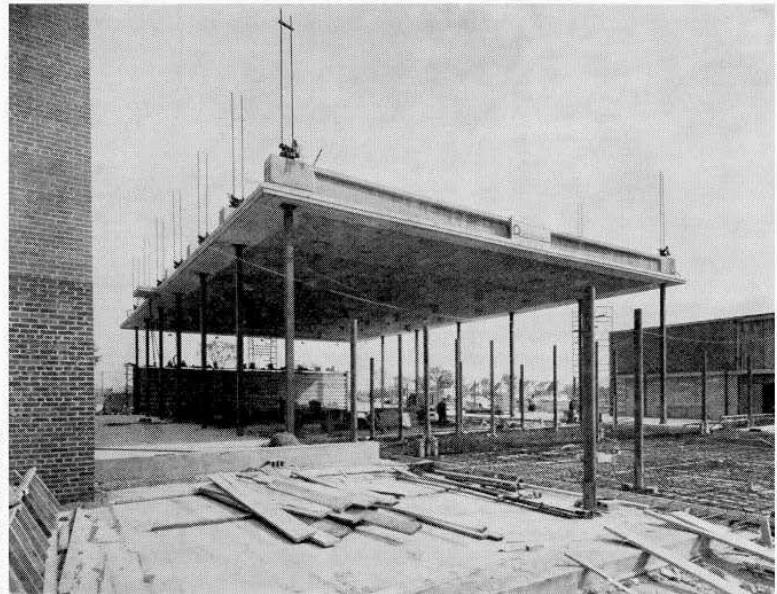
MAX FLEET





East elevation of classroom wing

The gymnasium roof, which has a span of 71'0", was designed as "one lift" with 4'0" high prestressed upstand concrete beams. An 8" slab from beam to beam with Durisol slabs provides a flat acoustically treated ceiling. The classroom wing was also lift-slab construction and was finished for occupation before the completion of the remainder of the building. Cost was \$11.91 a square foot and the building was completed in September 1957.



Gymnasium roof lifted into final position

