

DAVISVILLE PUBLIC SCHOOL & METRO TORONTO SCHOOL FOR THE DEAF  
OPENING DATE NOVEMBER 12, 1962

**Z. S. PHIMISTER** B.A., B.Paed., LL.D.  
DIRECTOR OF EDUCATION

**R. HARVEY SELF** B.A. Sc., P. Eng.  
COMPTROLLER OF BUILDINGS & PLANT

**F. C. ETHERINGTON** M.R.A.I.C.  
CHIEF ARCHITECT

**G. D. FRITTENBURG** B.Arch., M.R.A.I.C.  
DEPUTY CHIEF ARCHITECT

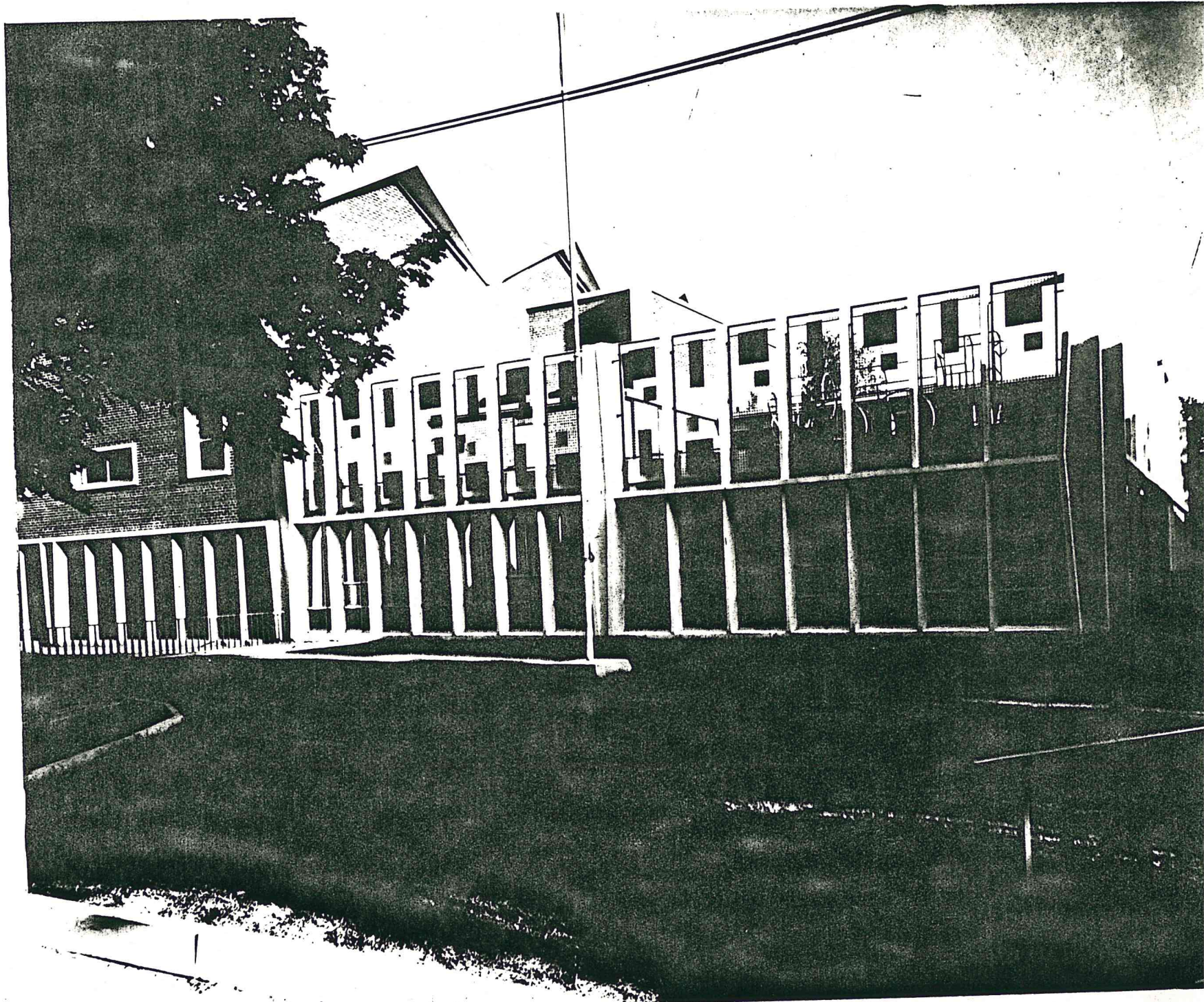
**H. G. FACEY** B.A. Sc., P. Eng.  
CHIEF ENGINEER

**B. H. BOYD** B.A. Sc., P. Eng.  
DESIGN ENGINEER, MECHANICAL

**A. T. ROBINSON** B.A. Sc., P. Eng.  
DESIGN ENGINEER, ELECTRICAL

**K. H. HATCH** B.A. Sc., P. Eng.  
DESIGN ENGINEER, STRUCTURAL





VIEW OF ROOF  
PLAYGROUND



DAVISVILLE PUBLIC SCHOOL (Junior)  
METROPOLITAN TORONTO SCHOOL FOR THE DEAF.

GENERAL DATA.

This project is unique in that it has a combined junior public school, a school for the deaf and day nursery centre in one building.

When the Sunny View School for orthopaedically handicapped children was constructed, a few classrooms were included in the building to serve deaf children who came mainly from the City of Toronto. With the establishment of the Metropolitan School Board and the assumption by that Board of the cost of education of deaf children, enrolment in the classes increased rapidly. Within five or six years there were more pupils from the suburbs than from the City of Toronto. The provision of new accommodation for deaf pupils became urgent. A plan to expand the Sunny View School to provide the needed facilities was abandoned in favour of relocating the deaf classes elsewhere.

In an intensive survey involving the Department of Education, the Toronto Board of Education, the Metropolitan School Board and the parents of children in the deaf classes, the whole matter of day classes for deaf children was reviewed. It was ultimately decided that a school should be provided in a relatively central location near public transportation. The general area near the Yonge-Davisville subway station was proposed. This led the Toronto Board to undertake the erection of the Metropolitan School for the Deaf in conjunction with the replacement of the Davisville Public School. The City of Toronto was proposing to locate a new day nursery centre in the area and an agreement was reached with them for the Toronto Board of Education to incorporate this in the building.

Twenty-one properties were purchased on Davisville Avenue and Millwood Road at a cost of \$482,506.00, drawings were prepared by the architects, engineers and staff of the Toronto Board of Education and tenders for the construction of the new school received on May 11, 1961. Building operations commenced in June, 1961, the cornerstone was laid at an official ceremony on June 15, 1962 and the building was completed and occupied by students on September 4, 1962.

The building consists of five units; the central unit containing the administrative offices, cafeteria and general purpose room; the two units to the east contain the classrooms, teachers' work rooms, hearing assessment clinic and audiometric testing room associated with the school for the deaf; the junior school is housed in the unit on the west side and the nursery centre is located at the far west end of the building.

The basic construction of the classroom units is a reinforced concrete frame, brick walls, hollow core concrete floors, slag block partitions and concrete hyperbolic paraboloid roof.

Floor construction in the centre unit is waffle type reinforced concrete with a wood floor in the general purpose room and platform.



A combination of small windows, double glazing and louvred screen mesh on the south side has helped reduce solar heat in the classrooms and noise from the outside.

Rooms have been designed to have a minimum transfer of noise by separation of structures, double walls and sponge rubber perimeter to ceilings and door frames. Other aids to noise reduction in the school for the deaf include the use of cork flooring in the classrooms instead of the usual vinyl tile and rubber tile in the corridors where terrazzo is normally used.

The playground on the roof of the day nursery centre and the audiometric testing room (soundproof) in the clinic area are points of interest.

An area analysis listing the accommodation and a breakdown of the costs is shown on the accompanying sheets.

Heat is supplied by an oil-fired steam heating plant. All combustion equipment, which includes the oil burners, incinerator and hot water heaters, complies with the requirements of the Metropolitan Smoke Abatement Department.

Classrooms are heated and ventilated by means of a dual duct high velocity system which has acoustically treated outlets under the windows. The air is admitted to classrooms under thermostatic control, which will maintain excellent thermal environment using fresh outdoor air for cooling. Acoustically, the treatment in the classrooms and throughout the building meets the very necessary high standards of the authorities.

Plumbing throughout the school meets the regulations of the Department of Health in design and quality of installation.

The kindergarten floor has radiant panel heating to provide a healthy, comfortable surface on which to play and sit. The nursery playdeck also has a radiant heating panel for the purpose of melting snow during inclement weather and thereby enable the youngest children to play safely out-of-doors under adequate supervision.

The classroom lighting is designed and installed to the quality and quantity of lighting recommended by the Illuminating Engineering Society for School Lighting. Sponsors of the lighting standards are the American Institute of Architects, Illuminating Engineering Society and National Council on Schoolhouse Construction.

The electrical equipment in the building consists of an electric fire alarm system, local dial telephone system, public address system and automatic programme and clock system.

The fire alarm system in this building is a combination of audible and visual signals; the audible signal by means of gongs and the visible system by means of flashing red lights located in all student occupied areas.

Additional electrical features are the induction loop systems concealed in the floors of the deaf classrooms and general purpose room, from which audio signals are omitted, originating from the desk console at the front of the room and picked up by the students' receivers.



DAVISVILLE PUBLIC SCHOOL AND  
METROPOLITAN TORONTO SCHOOL FOR THE DEAF

Architects: Board of Education Staff.

COMPARATIVE AREA ANALYSIS

ROOM NAME	Metro School for Deaf	Junior School	Joint Facilities	TOTAL (Complete School)
Classrooms for Deaf @ 639	5112			5112
" " @ 639	3834			3834
School Deaf Nursery	1598			1598
Kindergärten for Deaf	1277			1277
Gift Room	1351			1351
i. Junior Classrooms @868		7812		7812
• Kindergarten		1366		1366
chool Library			856	856
neral Purpose Room and Stage			3170	3170
essing Rooms			391	391
idance Room			370	370
ctivity Room			1545	1545
eachers' Work Room	865			865
afeteria (Pupils')			1057	1057
itchen (Incl. Servery)			1205	1205
elth Room	1076		356	356
ouch Centre	610			1076
earing Clinic	113			610
bservation Rooms				113
taff Room			973	973
taff Washrooms			541	541
taff Lunchroom			328	328
taff Kitchen			58	58
ome and School Kitchen			121	121
Offices	668	672	134	1474
Pupils' Washrooms	766	450	345	1561
Storage - Caretakers	-	-	1309	1309
- Athletic	64	57	-	121
- General	-	-	204	905
- Academic	357	344	290	290
Caretakers' Lunchroom	-	-	94	94
" Office	-	-	281	281
" Locker Room	-	-	1958	1958
Boiler Room			1383	1383
Fan & Mech. Eqpt. Rooms			459	459
Transformer Room			294	294
Electrical Equip. Room		3322	4349	13326
Gorridors & Stairwells	5655	1938	3050	8215
Inside & Outside Walls	3227			
TOTALS (Sq. Ft.)	26573	15961	25121	67655

4211 Sq. Ft.

City of Toronto Day Nursery - Unfinished Area  
(Interior finish by City of Toronto)

Building Division.  
November 5, 1962.

Design Capacity of Junior School - 345 Pupils  
School for Deaf - 148 Pupils.



DAVISVILLE PUBLIC SCHOOL AND  
METROPOLITAN TORONTO SCHOOL FOR THE DEAF.

Date Tendered: May 11, 1961.

Architects: Board of Education Staff.

COST ANALYSIS:

ITEM	TOTAL COST		DAVISVILLE PUBLIC SCHOOL		METRO SCHOOL FOR DEAF		DAY NURSERY	
	Area	Cost-Sq.Ft.	Area	Cost-Sq.Ft.	Area	Cost-Sq.Ft.	Area	Cost-S.F.
Building Contract - Bare Cost		\$ 848,875.00		11.81				
Hardwork		59,359.00		83				
Mechanical Contract		320,766.00		4.46				
Electrical Contract		134,698.00		1.87				
Co-ordination Fee (3% Mech. % Elec.)		13,663.92		19				
Architects' & Engineers' Fees		68,868.00		96				
Contingency @ 3%		41,320.08		57				
Drapes		7,500.00		10				
Permits, Surveys, Model, etc.		5,000.00		7				
<b>TOTAL FOR COMPLETE BUILDING</b>		<b>\$1,500,050.00</b>		<b>20.87</b>				
Academic Equipment		97,200.00		1.36				
<b>ALL INCLUSIVE TOTAL COST</b>		<b>\$1,597,250.00</b>		<b>22.23</b>	<b>\$ 558,427.00</b>	<b>\$ 19.58</b>	<b>\$ 984,823.00</b>	<b>\$ 25.17</b>
							<b>\$ 54,000.00</b>	<b>\$ 12.82</b>

Bare Construction only.  
Interior finish by City of Toronto by prior agreement.

SITE DATA: Area of Site 145,351 Sq. Ft.  
Area Occupied by Building 18,742 Sq. Ft.

Analysis by Building Division  
November 5, 1962



DAVISVILLE AVE.

501'-11 1/4"

155'-0"

4'-0" RIGHT OF WAY.

18'-0"

154'-0"

XX  
NO PARKING

A  
B

BASEBALL DIAMOND

BASEBALL DIAMOND

SOCCER FIELD

HOCKEY FIELD

HOCKEY FIELD

FOUR VOLLEYBALL COURTS

VOLLEYBALL COURT

VOLLEYBALL COURT

CIRCLE GAME

244'-10"

EX. HOUSE

EX. HOUSE

YONGE ST.

NEW SCHOOL BUILDING  
BUILT 1962

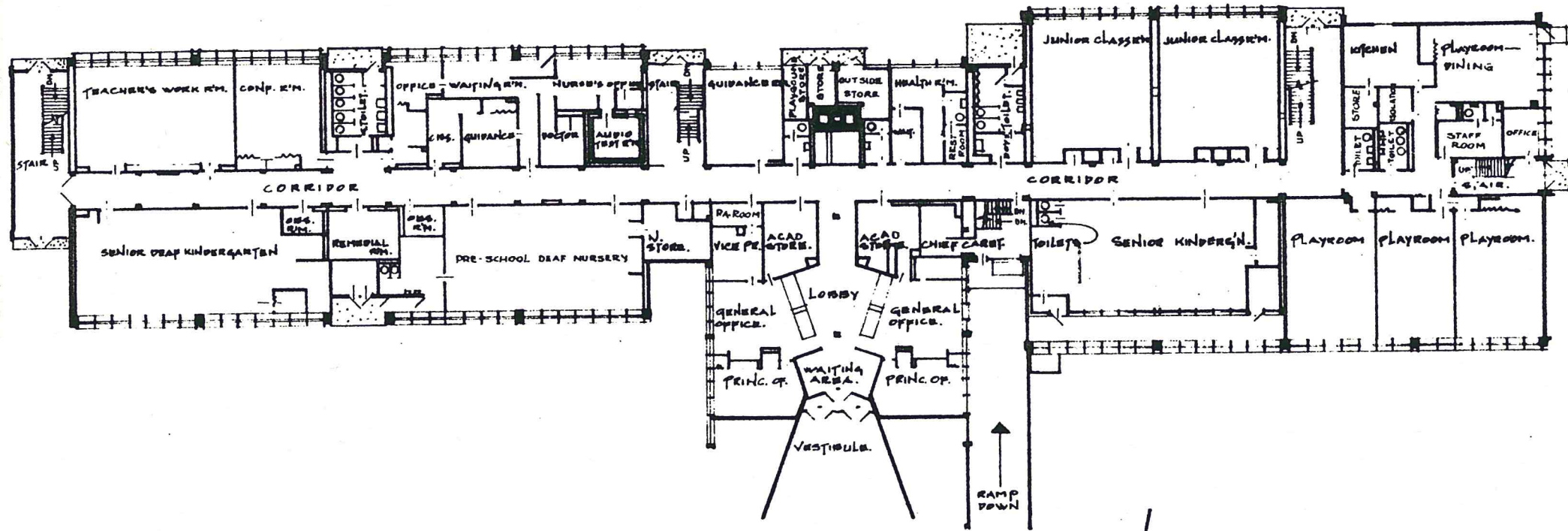
341'-0" MILLWOOD ROAD











FIRST FLOOR PLAN



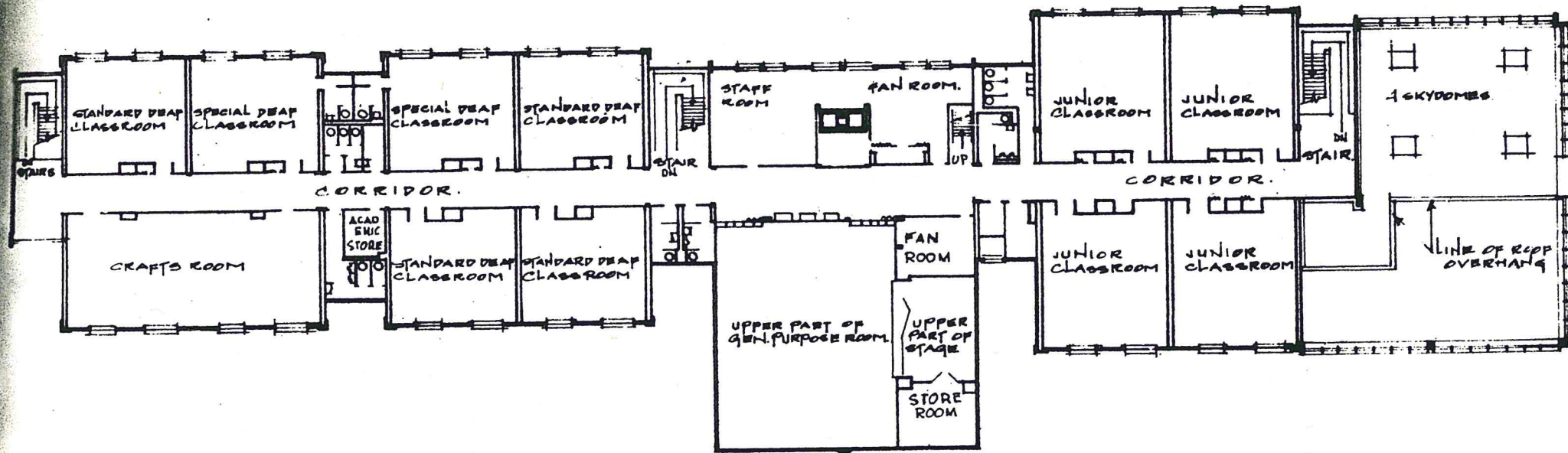
0 12 24 FEET

	2 FEBRUARY 62	THE BOARD OF EDUCATION TORONTO ONTARIO
--	---------------	---









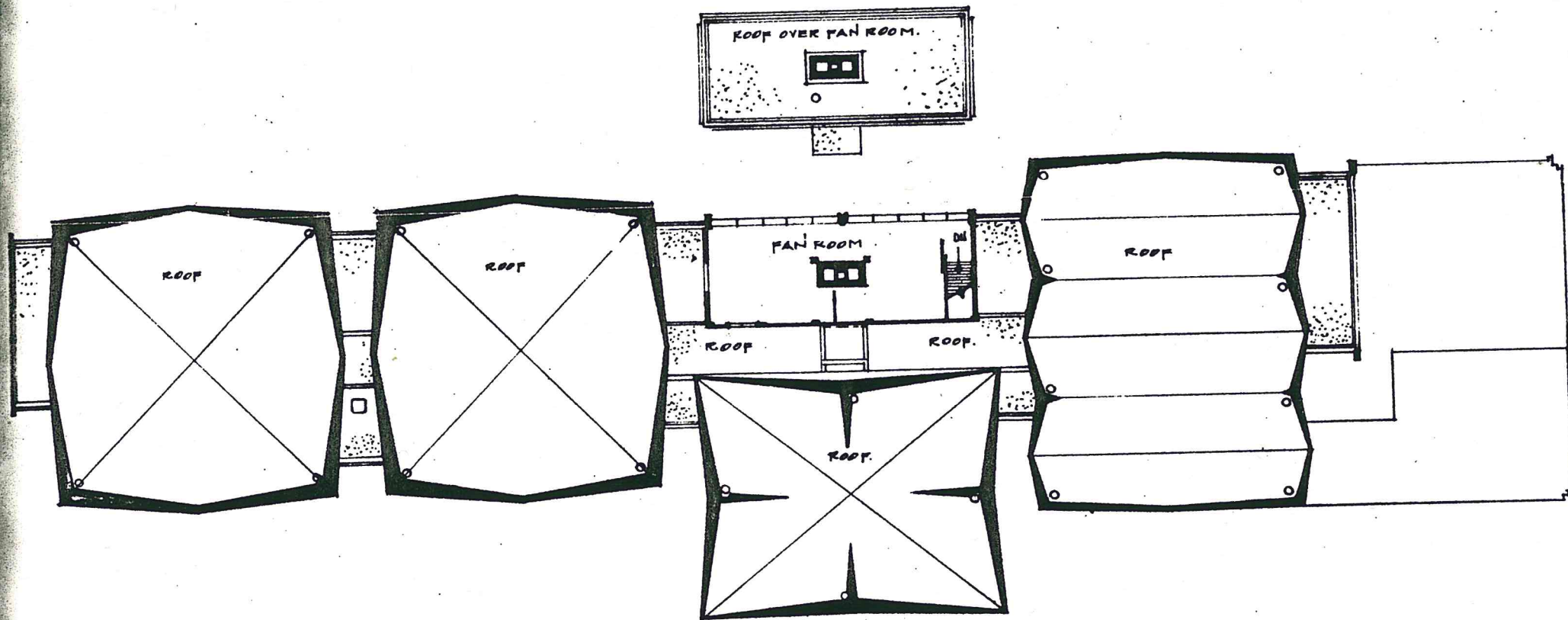
THIRD FLOOR PLAN



0 12 24 FEET

	2 FEB 62	THE BOARD OF EDUCATION TORONTO ONTARIO	
		<u>DAVISVILLE PUBLIC SCHOOL.</u>	





ROOF PLAN

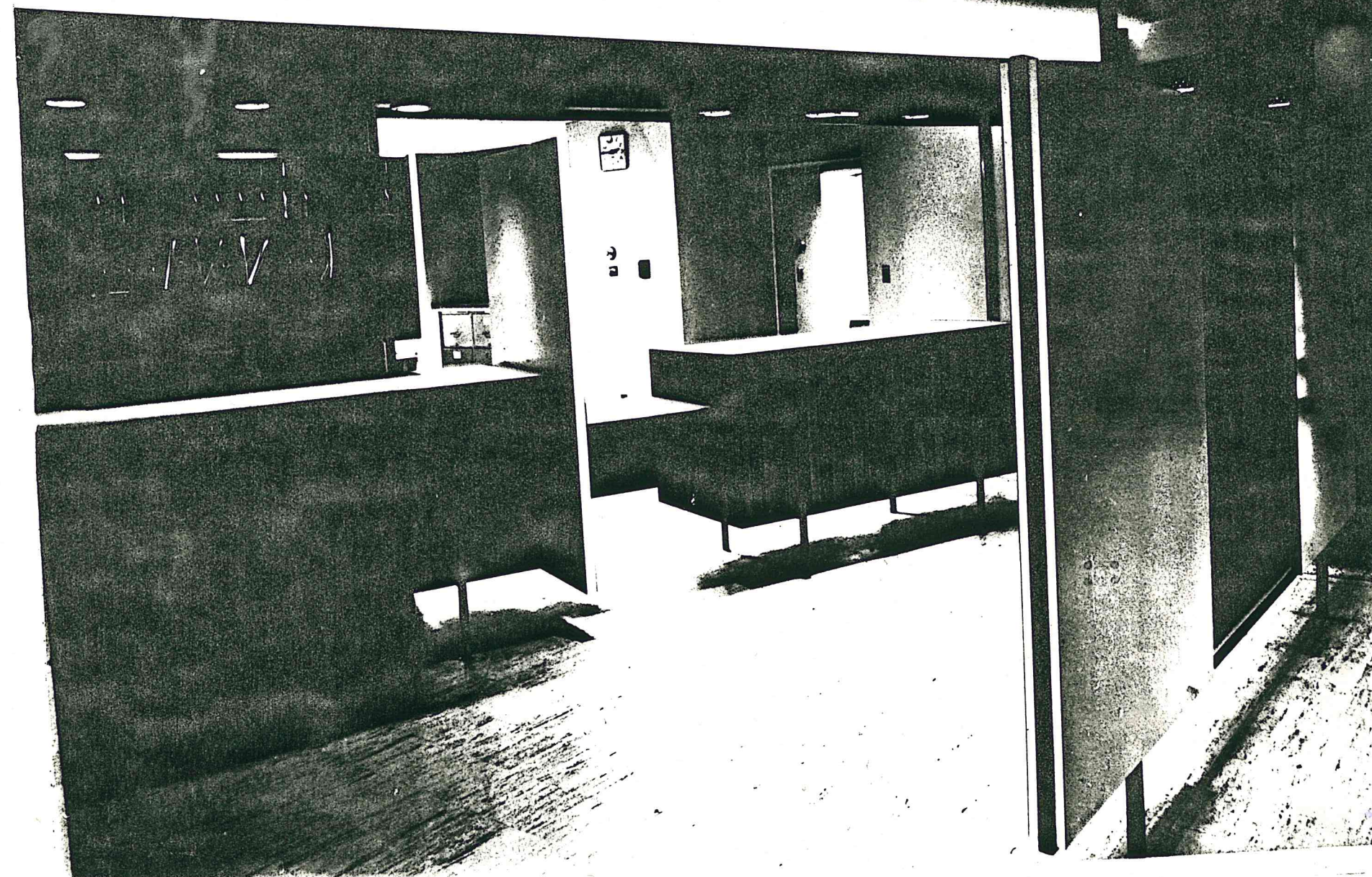


0 12 24 FEET

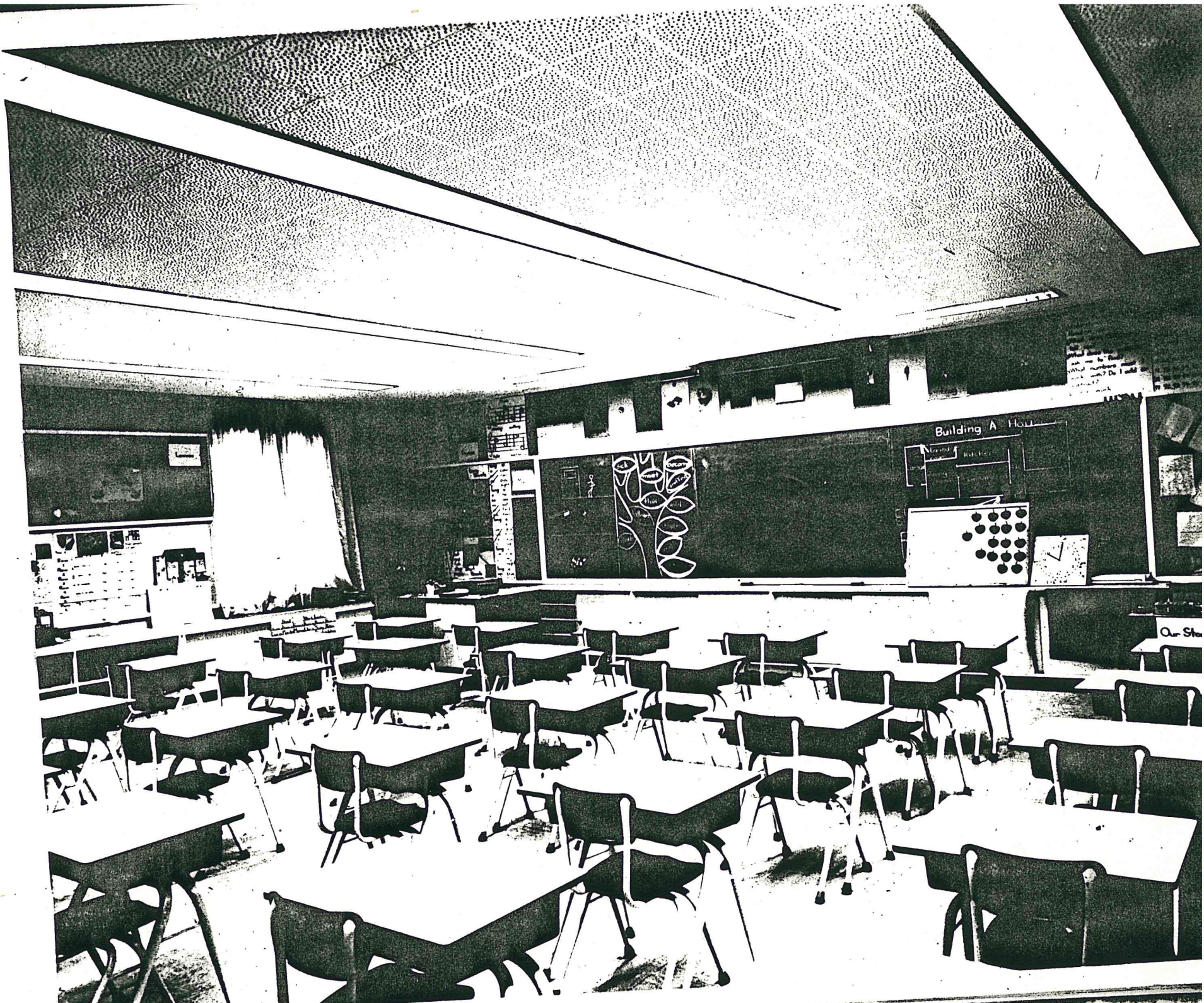
	2 FEBR. 1922	THE BOARD OF EDUCATION TORONTO ONTARIO	
		DAVISVILLE PUBLIC SCHOOL	



GENERAL OFFICE  
RECEPTION DESK

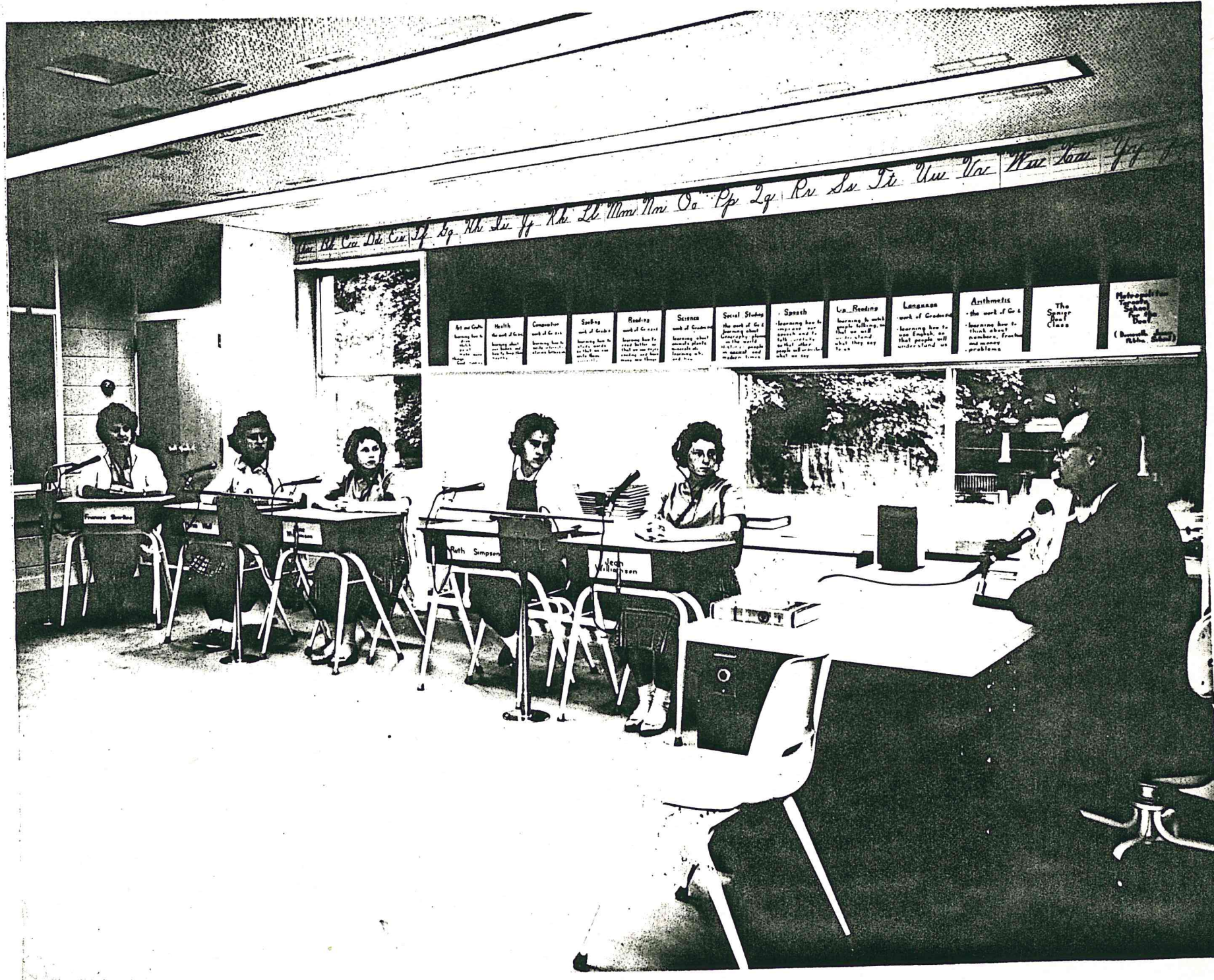






JUNIOR STANDARD  
CLASSROOM  
FRONT ELEVATION





DEAF CLASSROOM