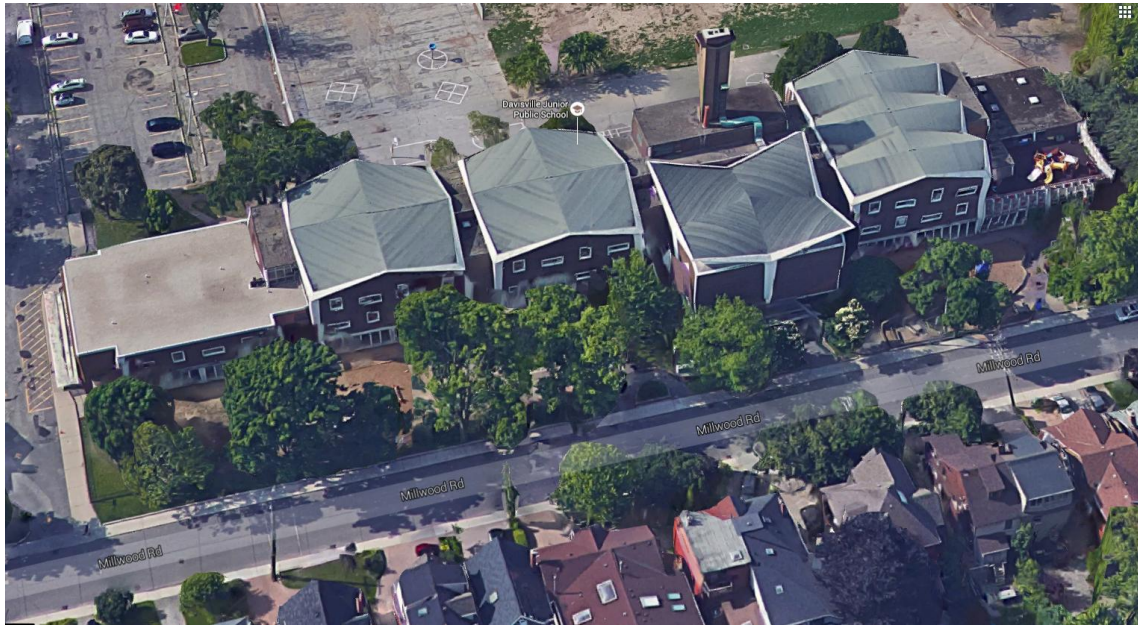


PHOTOGRAPHS:
43 MILLWOOD ROAD

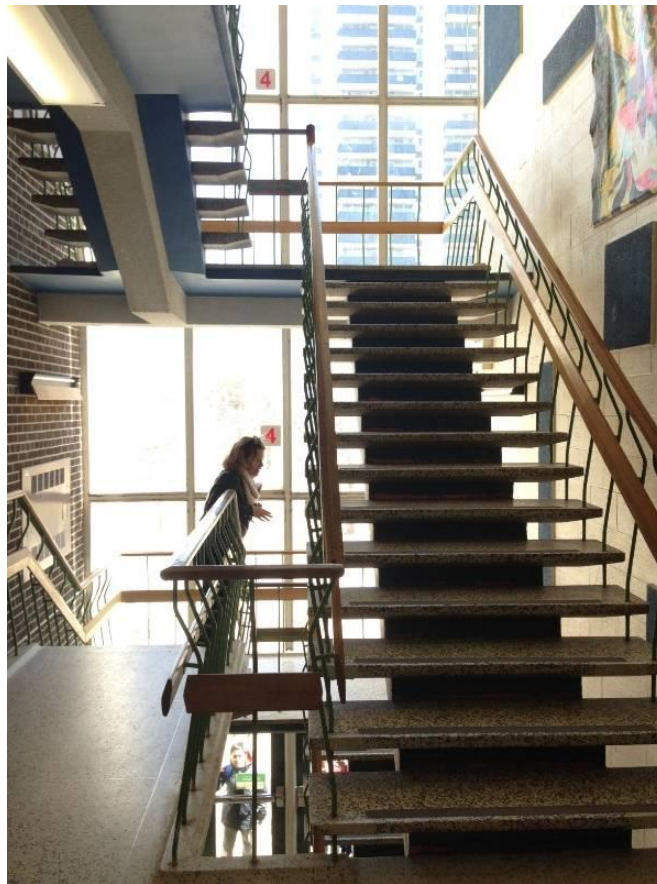
ATTACHMENT NO. 2



Photographs showing an aerial view of the school complex with the entry pavilion at the centre, two Toronto School for the Deaf pavilions to the left with the 1965-6 addition at the far left and the Davisville Junior Public School and Day Nursery on the right
(top photo- Google Maps April, 2016) and
the north elevation facing Millwood Road with the entry pavilion flanked by the junior school on the right and the Deaf School on the left (bottom photo - Heritage Preservation Services (HPS) 2016)



Top photograph showing the south elevation of the school facing the playground with the Day Nursery and Roof-top Playground on the left, the Junior School and shared services pavilion with chimney and the School for the Deaf with 1965-6 addition at the far right. (HPS, 2016)
Bottom photograph showing the east and north elevations of the two-storey, 1965-6 addition (HPS, 2016)



Top photograph showing the Entry Lobby originally shared by the Toronto School for the Deaf and the Davisville Junior Public School with the original reception desks for each school
(HPS, 2016)

Bottom photograph showing one of the original staircases (HPS, 2016)