



**ARCHITECTS**

*Pentland & Baker, Toronto*

**STRUCTURAL ENGINEERS**

*Carruthers & Wallace*

**MECHANICAL & ELECTRICAL ENGINEERS**

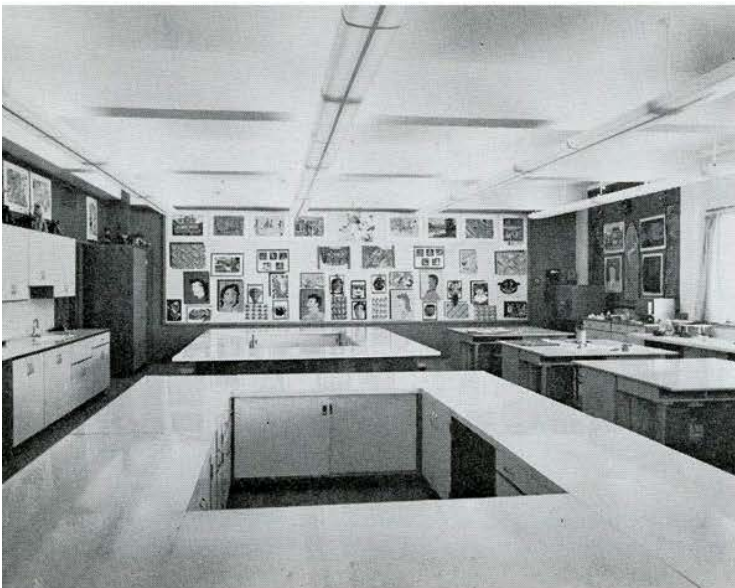
*Leah & Kobayashi*

**GENERAL CONTRACTORS**

*Bennett-Pratt Ltd, Toronto*

Photography by Max Fleet

## McMurrich Senior Public School, Toronto, Ontario



In October of 1958 work started on the alterations to McMurrich school and also on the new addition to this building. Less than a year later, in September 1959, students were admitted to classes.

The new addition is linked to the north building by a foyer which serves as the main entrance to both buildings.

The site, measuring approximately 476' x 496', provides for playing areas to the east which include courts for outdoor volleyball, basketball, softball diamonds, hockey area and protected kindergarten play area. To occupy the minimum of ground area, the new building was designed with a central core containing the swimming pool below and the gymnasium above. Surrounding this on three levels are the classrooms, shops, music rooms, laboratories located on the north, west and south sides of the building; on the east, the changing and shower rooms.

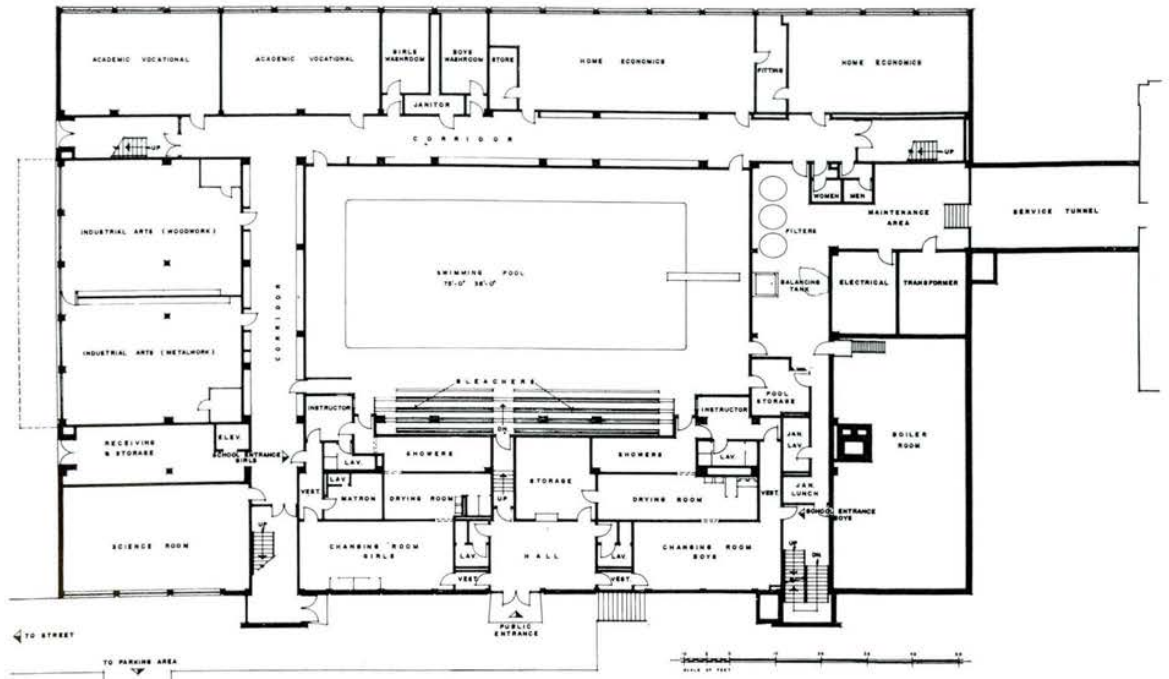
The new addition provides, on the lower floor, for home economics, sewing room, academic vocational rooms, wood-working shop, metal shop, science room, washrooms; boiler, mechanical and electrical rooms; the swimming pool and the boys' and girls' changing and shower rooms. The pool is 75' long by 36' wide, providing six racing lanes. On the second level are five standard classrooms, lunch room for 300, kitchen area, staff lunch room and lounge, guidance classrooms, administration offices, and washrooms.

On the upper floor there are five standard classrooms, two music rooms (vocal and instrumental), speech and drama classroom, library, artroom, double gymnasium and stage with changing rooms, and instructors' rooms.

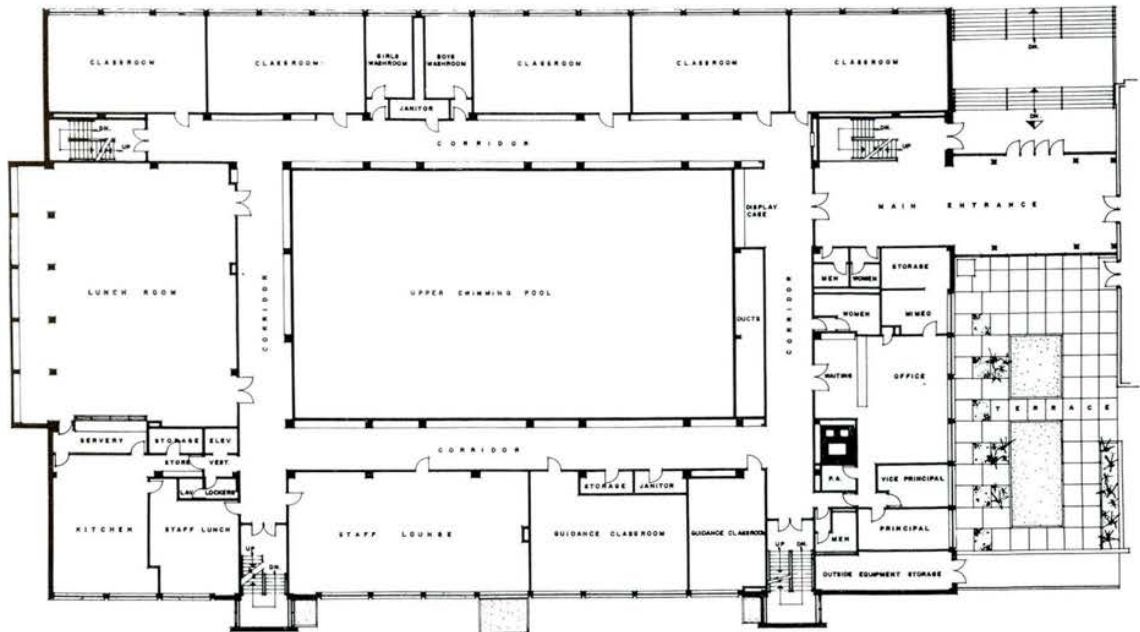
Generally, the new addition is of structural steel frame, fireproofed and with open web steel joists and concrete slabs. The exterior brick is in two shades, particularly noticeable in the checker board pattern of the spandrels on the west face of the building. Some exposed concrete and panels of coloured glass add to the crisp exterior. Windows are aluminum and have been reduced in height to minimise sun glare in the classrooms. All stairs are steel with terrazzo treads, and floor finishes are terrazzo, vinyl asbestos and linoleum tile. Walls in the building, where they are not painted plaster, are block, treated with Epon based paints.



FIRST FLOOR



SECOND FLOOR



THIRD FLOOR

