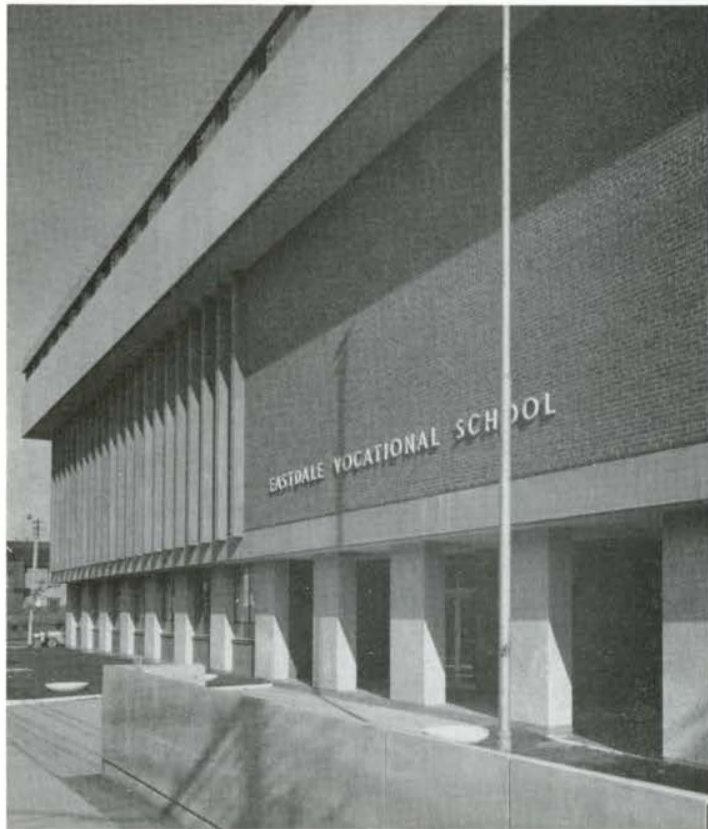


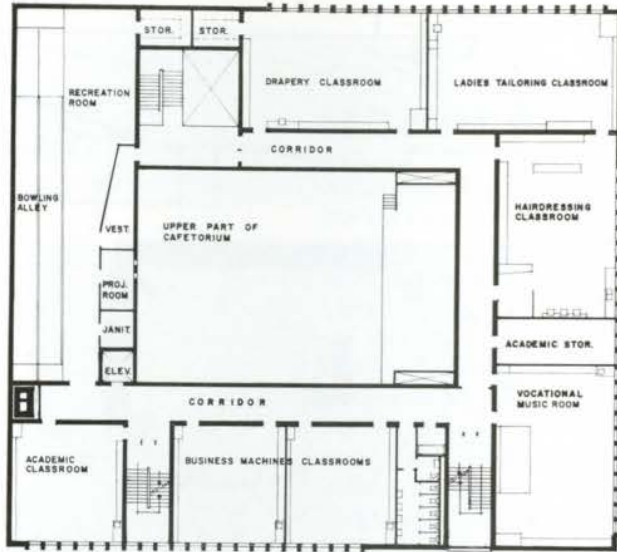


EASTDALE VOCATIONAL SCHOOL

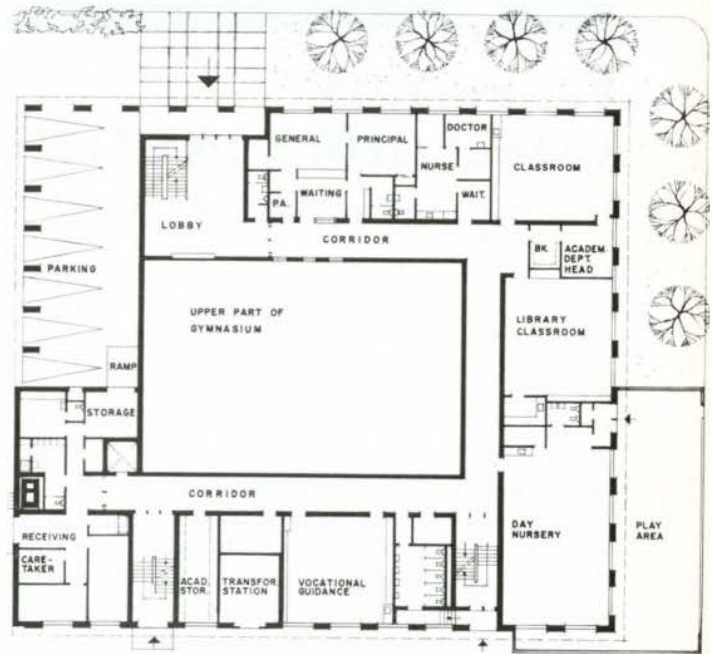
ARCHITECTS — JAMES A. MURRAY & HENRY FLIESS • FOR THE TORONTO BOARD OF EDUCATION — F. C. ETHERINGTON — CHIEF ARCHITECT • ENGINEERS • STRUCTURAL M. S. YOLLES ASSOCIATES LTD. • MECHANICAL — A. BRITTAIN & ASSOCIATES LTD. ELECTRICAL — W. H. BONUS & ASSOCIATES GENERAL CONTRACTOR — MITCHELL CONSTRUCTION COMPANY LIMITED



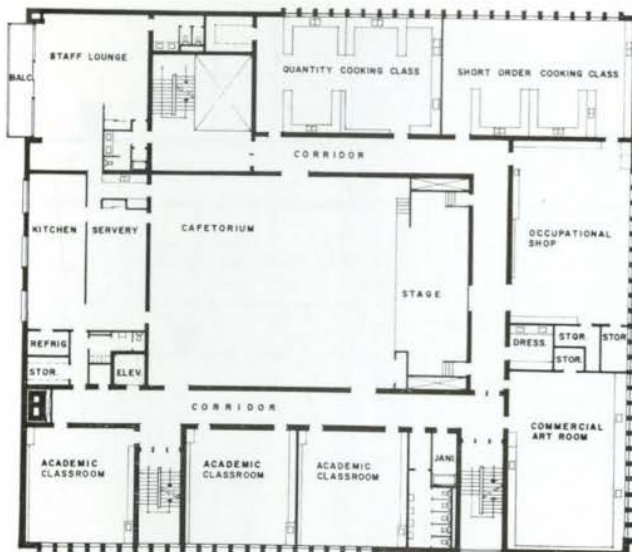
Replacing an existing building on the original site, this girls' vocational school is located on a major thoroughfare in one of the older neighbourhoods of Toronto. From the site limitations a compact building of five storeys evolved; the gymnasium is sunk below grade and the top floor became a roof playground — an innovation resulting directly from the lack of playground space. The plan has a central core with the gymnasium extending through two storeys and the auditorium on the second and third storeys. Classrooms and special teaching areas are located at the perimeter, one of the special facilities being a nursery where the supervision of children is part of the curriculum.



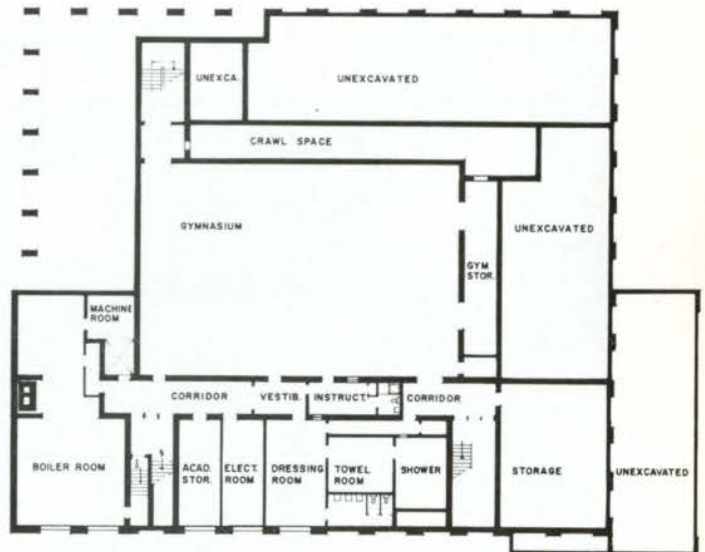
THIRD FLOOR



FIRST FLOOR



SECOND FLOOR



BASEMENT

1. Main entrance lobby and stairway. 2. Facade at Gerrard Street with the main entrance on the right. 3. General view from lower playground. 4. Perspective view of model showing the upper level playground with changing facilities at rear. (Gerrard Street in the foreground.) 5. East elevation showing staff parking facilities.

Photos by Newton