

# Moccasin Identifier Project

By Carolyn King

**If we, as First Nations People,  
don't get a marker on the ground today,  
we will be lost Forever.**

# Moccasin Identifier Project

- How will they ever know about us?
- How will they recognize whose land they're on?
- How will they know us as we live today?

# How Will They Ever Know About Us

Sites that are significant to us:

- Indian Reserves (as we live and know today)
- Ancestral villages (where we once lived)
- Burial grounds (at ancestral sites / areas)
- Sacred sites (gatherings, spiritual places)
- Medicine sites



# Significant Sites

- Trails
- Summer/Winter camps
- Hunting / Fishing / Gathering / Harvesting sites

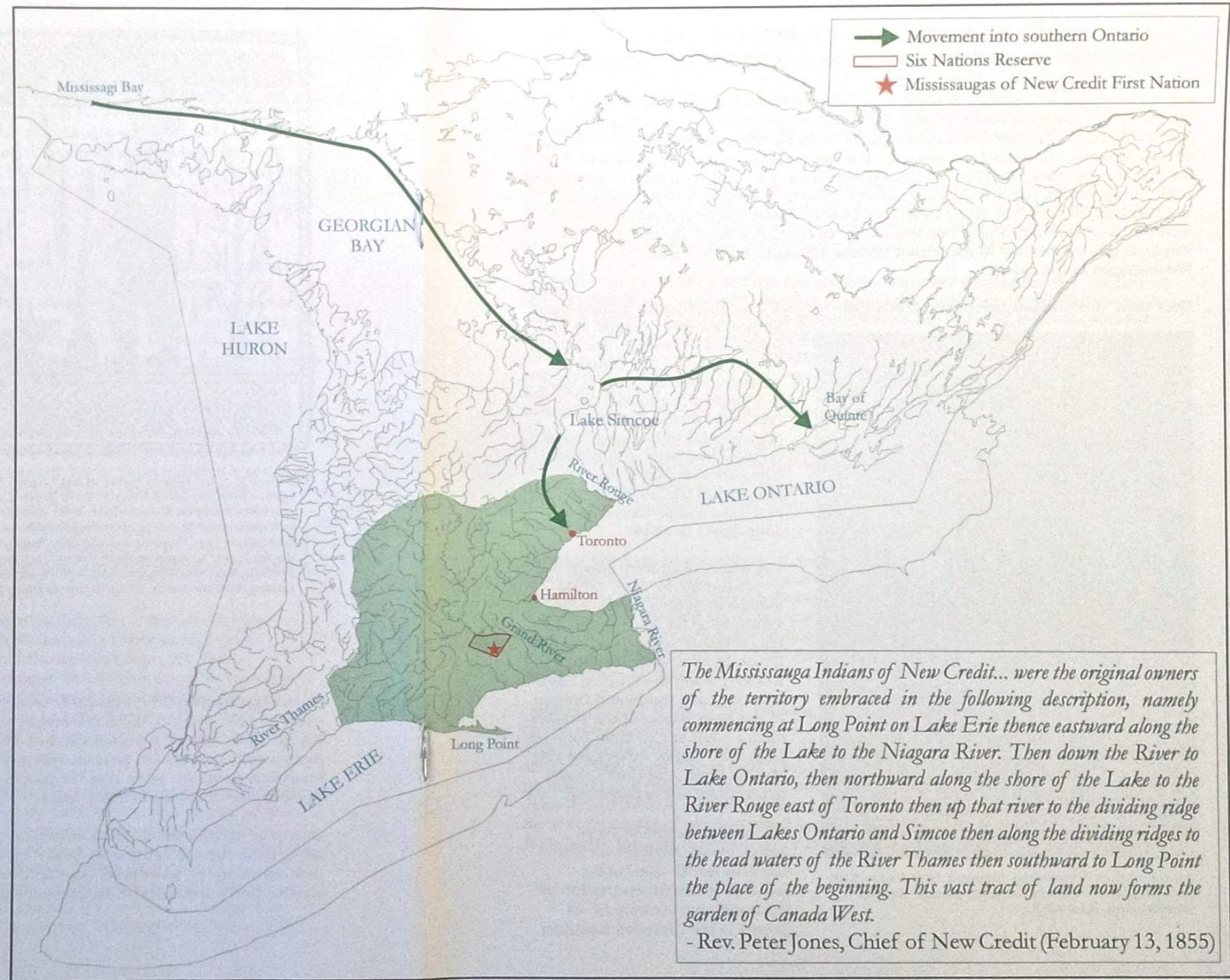
Almost always along the waterways

# What We've Done To Date

- Promoted the idea of some type of marker or plaque be placed on sites that have been ploughed up, dug up, paved over, built over
- Further Research – use sites that have produced archaeological evidence that our people were present
- Come up with the idea of a moccasin as a symbol to recognize their existence /identity

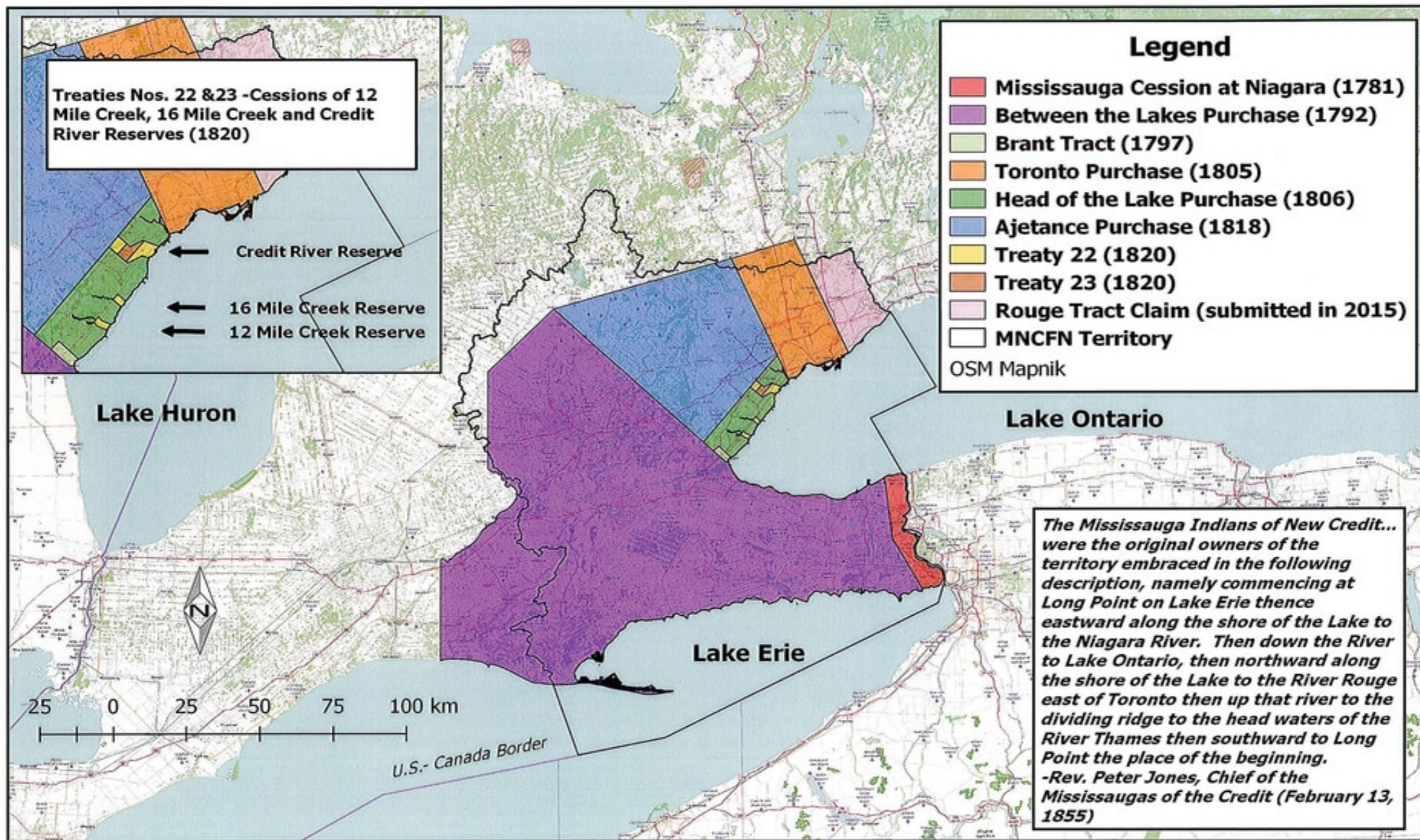


Credit  
Mississauga  
Territory,  
circa  
1695





# MNCFN Treaty Areas



**Mississaugas of the New Credit First Nation Land Cessions 1781-1820 and Rouge Tract Claim, 2015**



# Area Identified as our Traditional Territory

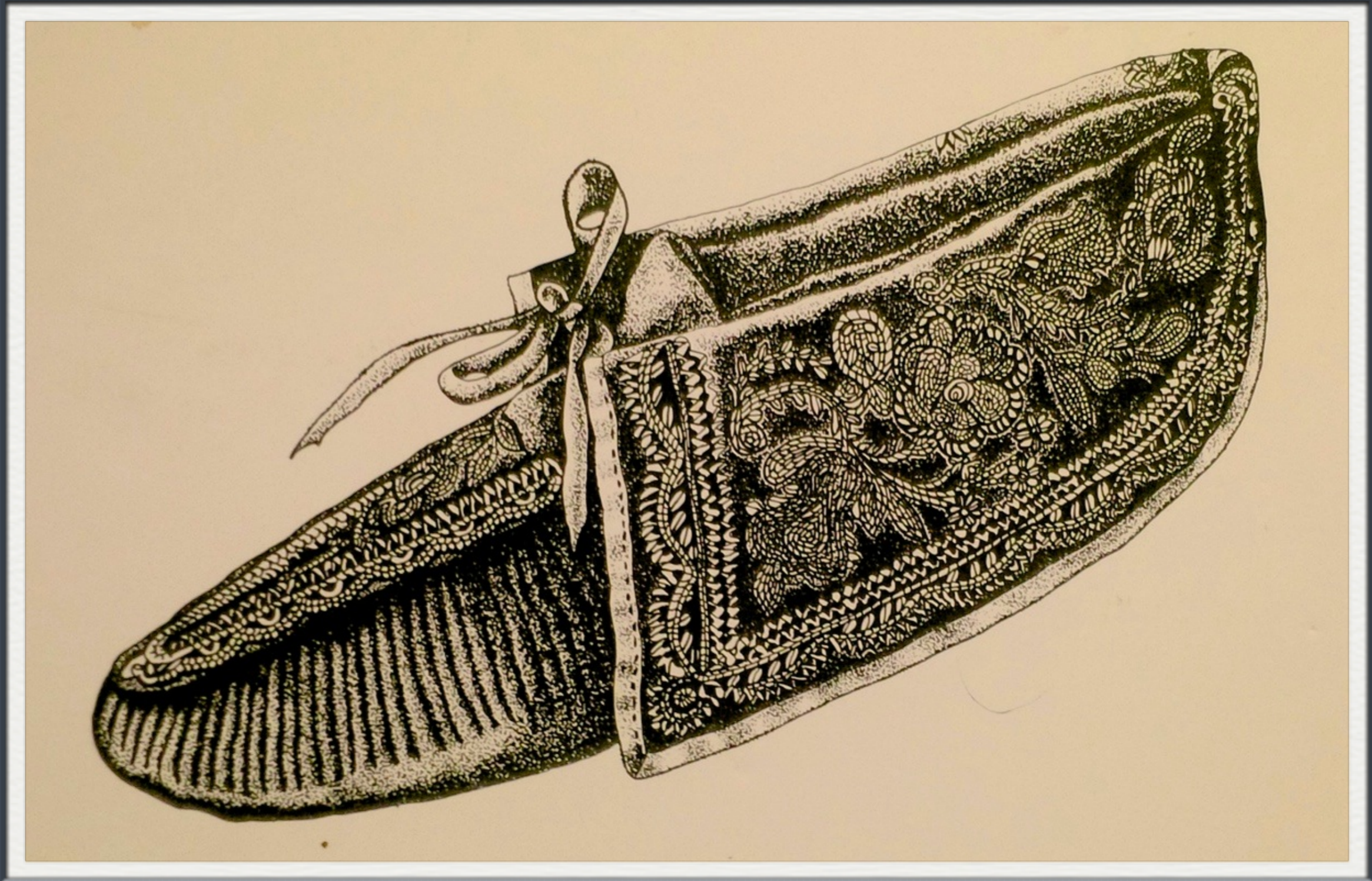




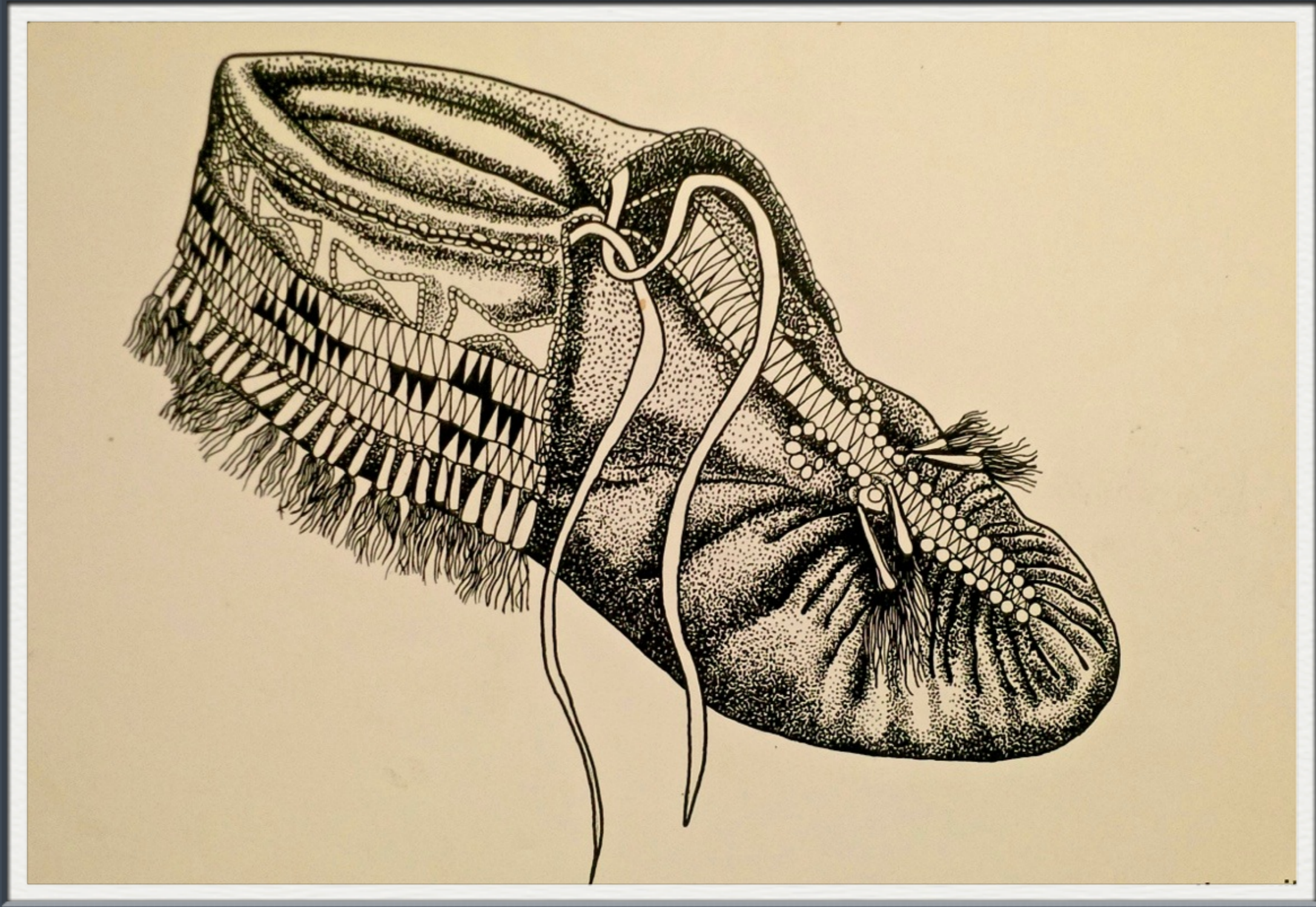
# Research Done

- Linked with and Friends & Teachers in the Toronto Area – Catherine Watt suggested a marker
- Researched at The Bata Shoe Museum which has a magnificent collection and exhibition of shoes from the entire world with over half being indigenous ([www.batashoemuseum.ca](http://www.batashoemuseum.ca))
- We come up with these designs as shown











# Turned into a stencil



# Guelpth – banners





# Ontario Place – new park entrance





# Ontario Place – new park entrance





# Next Steps

The First Nation is preparing implementation across the territory and plans to meet with Ministry of Education to have this become a province wide initiative. You can help.

- - suggest sites where the symbol could be painted
- - research your own office location, give input on stories, write a lesson plan for your area, identify significant sites and areas
- Chi Miigwetch